

Stereo-seq 芯片P (1cm*2cm,
2cm*2cm, 2cm*3cm)

Stereo-seq 芯片T (1cm*2cm,
2cm*2cm, 2cm*3cm)

保存操作指南

收到后

Stereo-seq 芯片装于真空密封的铝袋中, 冷链运输。

请及时确认铝袋是否完好并处于真空密封状态, 随后立即将未开封的Stereo-seq 芯片储存在 -20°C 或 4°C 。

未开封的情况下, 产品可在 -20°C 或 4°C 保存至标签上的有效期。

打开后

将未使用的Stereo-seq 芯片放入透明芯片盒, 随后放回原装铝袋中。往铝袋中放入干燥剂, 尽量挤出袋内空气并重新密封。

再次确认铝袋是否完好并处于密封状态, 随后立即将铝袋储存在-20 °C或4 °C。未真空密封的芯片不可放置超过两周, 开封后请尽快使用。

请您拆开铝袋后检查以下事项:

- 芯片种类与包装描述不符
- 芯片数量与产品规格不符
- 芯片正面有肉眼可见划痕

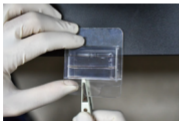
如果您发现产品存在上述问题, 请及时将情况反馈给科研合作代表或技术人员。

操作指南

为保证运输稳定性,大尺寸芯片与透明芯片盒底部粘贴较牢固。

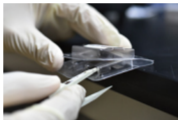
a. 取出芯片时,需先将芯片盒盖子半掩,避免后续操作不当导致芯片飞起;

b. 将芯片盒半悬于桌边,用镊子上半部分尖端扎进芯片与背胶之间,轻轻往前推动镊子,使芯片缓慢脱离双面胶;

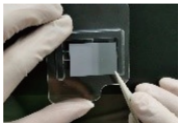


操作指南

c. 移动镊子至仍然粘连芯片盒的另一端, 采用同样方式操作直至芯片完全脱离;



d. 用钝头镊子夹持芯片右下角2~3mm长宽处位置取下芯片, 如下图所示:



更多产品指南

请前往查看或下载:

<https://www.stomics.tech/resources/Documents/list>



Step 1:在页面右侧勾选栏中点击想要查看的指南类型。

Step 2:点击“封面图片”可进入预览页面,点击“下载”可进入下载页面。

联系我们

网址:<https://www.stomics.tech/>

邮箱:services@stomics.tech

STOmics

**Stereo-seq Chip P (1cm*2cm,
2cm*2cm, 2cm*3cm)**

**Stereo-seq Chip T (1cm*2cm,
2cm*2cm, 2cm*3cm)**

**Operation Guide For Receiving,
Handling And Storing**

Upon receiving

Stereo-seq Chips are transported by cold chain in vacuum sealed aluminum bags.

Upon receiving, check if the aluminum bag is sealed and packaged in good condition then immediately store unopened Stereo-seq Chips at $-20\text{ }^{\circ}\text{C}$ or $4\text{ }^{\circ}\text{C}$.

It can be stored up to the expiration date on the label at $-20\text{ }^{\circ}\text{C}$ or $4\text{ }^{\circ}\text{C}$ unopened.

Once opened

Place unused Stereo-seq Chips back in the slide container and in the original aluminum bag. Push out as much air as possible then keep sealed with the desiccant package inside the aluminum bag.

Check again if the aluminum bag has been sealed tightly then store at -20°C or 4°C . Opened Stereo-seq Chips can be stored at -20°C or 4°C up to two weeks. Please use the chips as soon as they are opened.

Please check if these happened upon opening of Stereo-seq Chips package:

- The chip type did not match the description
- The number of chips did not match the product specification
- Visible indent or scratch marks on the chip

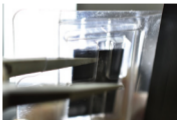
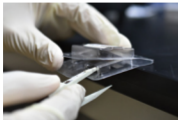
If any of these occurred to your product, please timely report the situation to your local BD representative or FAS.

Handling guide

In order to ensure the stability of transportation, Stereo-seq Large-sized Chips are firmly attached to the bottom of the transparent transportation box using double-sided adhesive.

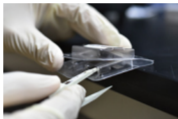
a. When removing the chip, please fold and close the lid half way down to avoid the chip pop up and fall off as a result of subsequent improper handling;

b. Half-hang the transportation box on the edge of the table, use the tip of the upper part of the sharp-end forceps to squeeze in between the chip and the adhesive backing, and then gently push the forceps forward to slowly separate the chip from the double-sided adhesive;

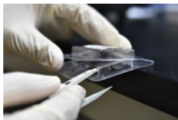


Handling guide

c. Move the forceps horizontally across the back of the chip and to the other end of the transportation box, maneuver the forceps until the chip is completely detached;



d. Use blunt-end forceps to grip onto the lower right corner of the chip at a distance about 2~3 mm in length and width and then remove the chip from the transportation box, as shown in the figure below:



For product-related documents

Please visit:

<https://en.stomics.tech/resources/documents/list>



Step 1: Select the type of resources on the right side of the page

Step 2: Click on the image to preview the document. Click 'download' then sign in to download the corresponding document.

Contact Us

Web: <https://en.stomics.tech>

Email: info_global@stomics.tech